

DO NOT SCALE FROM THIS DRAWING. USE FIGURED DIMENSIONS IN ALL CASES. VERIFY DIMENSIONS ON SITE AND REPORT ANY DISCREPANCIES TO THE DESIGNERS IMMEDIATELY.
THIS DRAWING TO BE READ IN CONJUNCTION WITH THE DESIGNERS SPECIFICATION.
© THIS DRAWING IS COPYRIGHT AND MAY ONLY BE REPRODUCED WITH THE DESIGNERS PERMISSION.

LIGHTING LEGEND:

- 1 HOLOPHANE EUROPE LIMITED - DEB.L024 AY CGL, DENVER ELITE WALL. Luminous emittance 1. Filing: 1xLED C:2000M - 4000K. Absolute photometry. Luminaire luminous flux: 2490 lm. Power: 23.2 W
- 2 HOLOPHANE EUROPE LIMITED - SLJ.2.LA054.R2.W037 S-LINE Streetlighting luminaire with a Type III - Medium distribution. Luminous emittance 1. Filing: 1xLED C:5000 Lumens. Absolute photometry. Luminaire luminous flux: 4820 lm. Power: 37.0 W. Luminous efficacy: 130.3 lm/W. Mounted on 6m octagonal columns.
- 3 HOLOPHANE EUROPE LIMITED - SLJ.2.LA053.R2.W059 S-LINE Streetlighting luminaire with a Type III - Medium distribution. Luminous emittance 1. Filing: 1xLED C:8000 Lumens. Absolute photometry. Luminaire luminous flux: 7972 lm. Power: 59.0 W. Luminous efficacy: 135.1 lm/W. Mounted on 6m octagonal columns.
- 4 PLATEX S.R.L. - SPY Large Vetro Nero LED (BW - 4000K) Asymmetric. 220-240V 50/60Hz. 5004109. Filing: 1xLED. luminous flux: 150 lm. Power: 8.0 W
- 5 HOLOPHANE EUROPE LIMITED - DEB.L024 PAY TR. DENVER ELITE BOLLARD. Luminous emittance 1. Filing: 1xLED C:2000M - 4000K. Absolute photometry. Luminaire luminous flux: 1780 lm. Power: 23.0 W. Luminous efficacy: 77.4 lm/W. Height of bollard is 1m



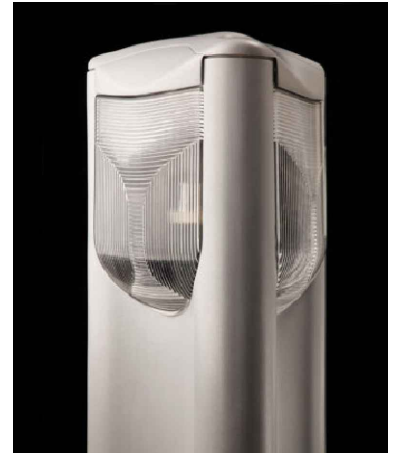
TYPE 1



TYPE 2 & 3



TYPE 4



TYPE 5

PROJ	05/12/24	ISSUED FOR PLANNING	S.S.	I.B.
REV	29/11/24	ISSUED FOR PLANNING	S.C.	F.F.
REV	DATE	DESCRIPTION	BY	APP

PROJECT:
INIS CEALTRA VISITOR TOURISM EXPERIENCE PROJECT

TITLE:
PROPOSED VISITORS CENTRE LIGHTING LAYOUT FOR PLANNING

CLIENT:
 **COMHAIRLE CONTAE AN CHLÁIR**
CLARE COUNTY COUNCIL



DRAWN:	S.C.	CHECKED:	F.F.	APPROVED:	F.F.
PROJECT NUMBER:	21760	DATE:	NOV '24	SCALE @ A1:	1:250
STATUS DESCRIPTION:	FOR INFORMATION			STATUS:	S2

DRAWING NUMBER: 21760 - MWP - ZZ - ZZ - DR - E - 9101 REV: P02

